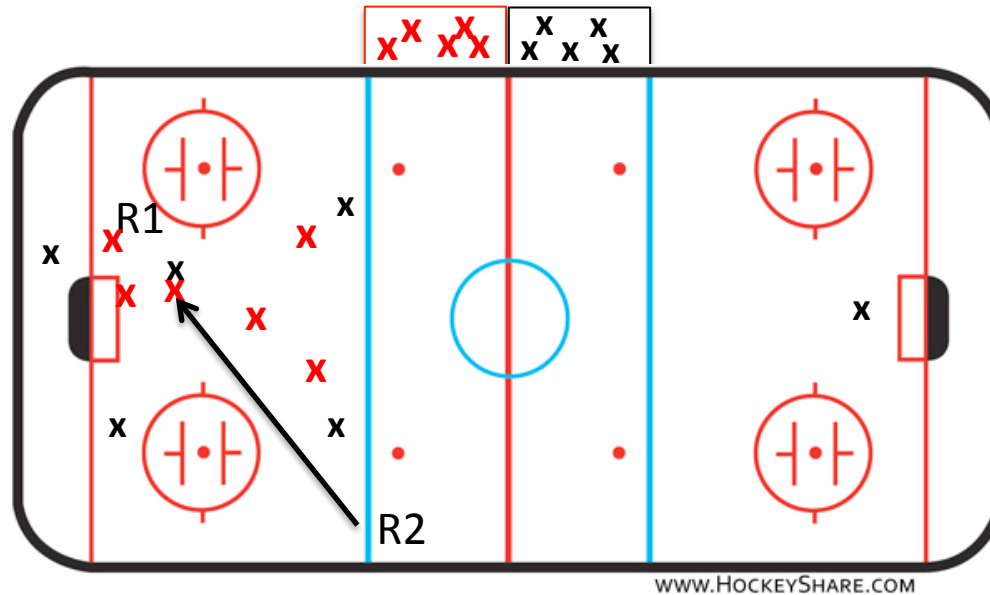


# Line Change Procedure-Two Official System

# Part One: Separate the players

**Referee 1** has stopped play and is going to take the role of talking the players out of a scrum and getting involved only if absolutely necessary.

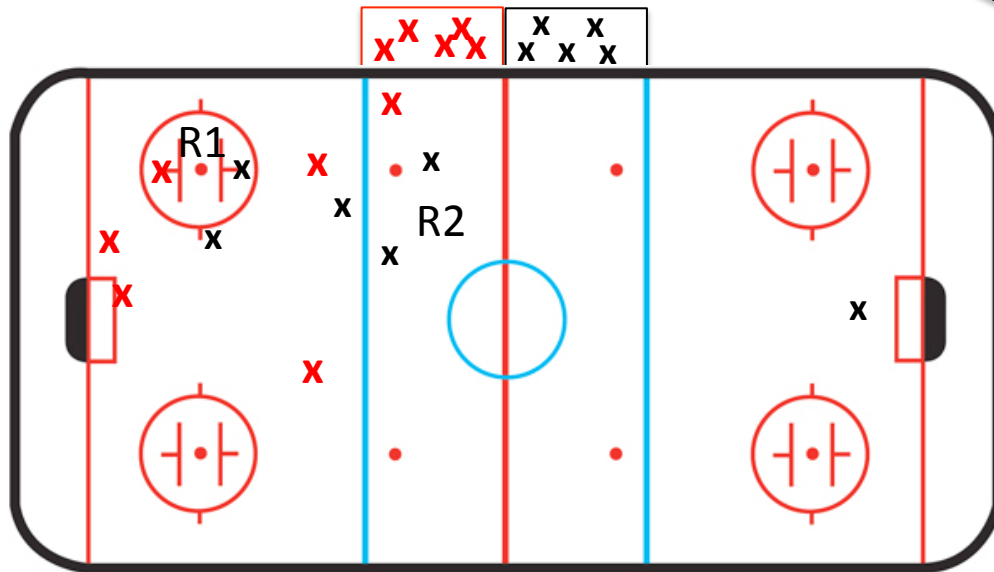
**Referee 2** will come into the zone to help separate players



## Part Two: After players separate

**Referee 1** will retrieve the puck and proceed to the next faceoff spot while being aware of the actions of the players around her.

**Referee 2** will position himself where the next player scrum is most likely to occur; this will often be near the benches where the line change is occurring. This referee will also be responsible for conducting the line change.

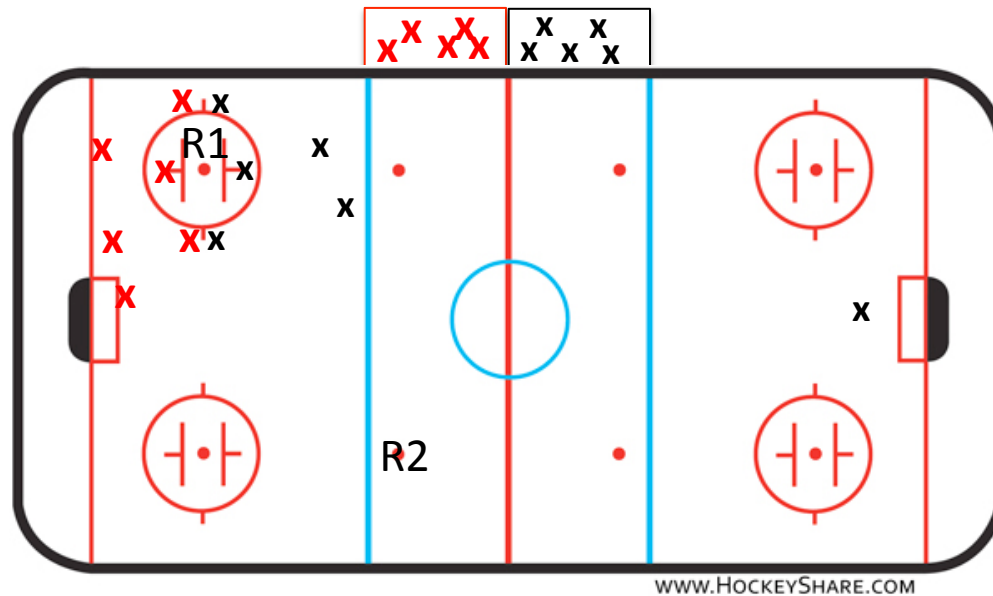


WWW.HOCKEYSHARE.COM

1. Referee 2 will give the visiting team five seconds to change players after the on-ice players have separated. After five seconds referee 2 raises his hand while making eye contact (signaling the visiting team may not change any more).
2. The home team has five seconds to change. Referee 2 drops his hand after five seconds.
3. Referee 1 will blow her whistle, talk the players into position, then drop the puck within five seconds of blowing whistle

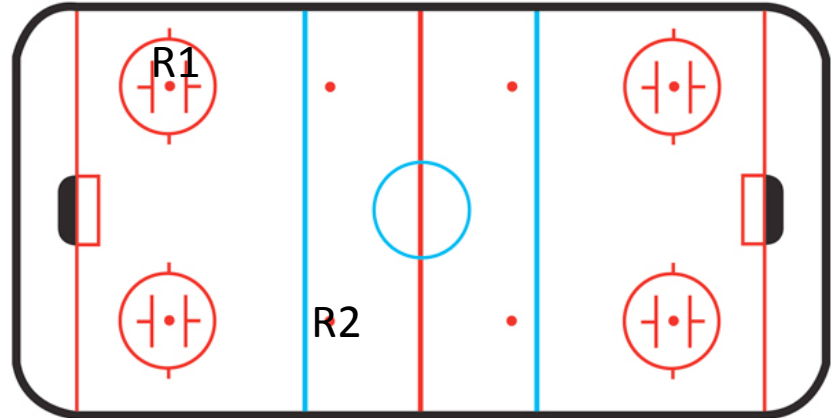
# Part Three: Ready for face-off

After R2 drops his arm, he proceeds to the opposite side of the ice from where the faceoff is taking place, lines up at the neutral zone dot to watch for encroachment behind R1 then skates backwards to the boards after puck has been dropped

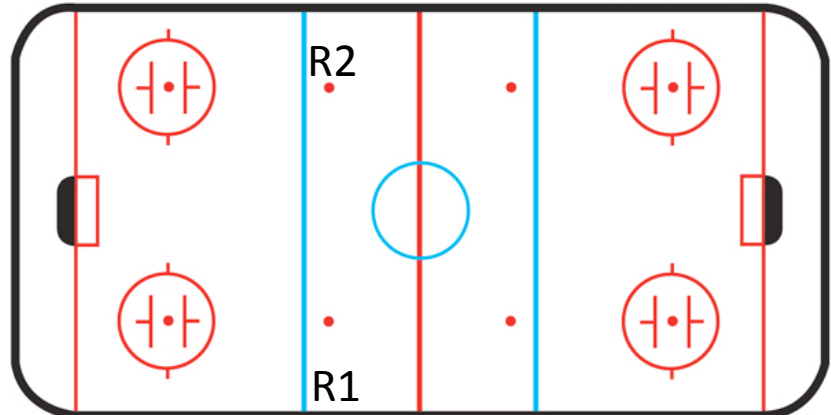


## Part Three Continued: Ready for face-off

ONE: This is the example from the previous slides with R1 dropping the puck and R2 watching for encroachment behind R1). R2 has completed the line change procedure.



Two: R2 is dropping the puck at the neutral zone faceoff dot, R1 is outside the blue line, ready to go either direction. R1 has completed the line change procedure.



Three: R1 is dropping the puck at center ice, R2 would be standing in front of the timekeeper's box for start of game, but in front of player's benches for all other center ice faceoffs. R2 has completed the line change procedure.

